



ICE  ROCKET
fueled by  Cold Jet.

PRODUCT BOOK



PROFESSIONAL-GRADE, ENTRY-LEVEL DRY ICE BLASTER

Evolve the way you clean your equipment with the enhanced IceRocket PLT. Designed with advanced operating principles, the IceRocket PLT maintains a smooth cleaning performance with an enhanced dosing disc operation.

With a small footprint and a stainless steel frame, the IceRocket PLT is designed to provide a rugged and reliable cleaning solution with minimal air requirements.

- Stainless steel body
- Insulated hopper
- Allen Bradley safety relay
- Easy-adjusting dosing system

The IceRocket PLT supports short blasting sequences with low dry ice consumption. Due to its compact size and gentle cleaning capabilities, the IceRocket PLT is an excellent cleaning solution for delicate equipment components.

- Multifunctional
- Environmentally responsible
- Non-abrasive
- Non-toxic
- Non-conductive
- Completely dry
- Void of secondary waste
- Cleans equipment online
- Cleans equipment at operating temperature
- Less power consumption
- Lowest cost of ownership on the market





TECHNICAL SPECS

MACHINE DIMENSIONS

Length x Width x Height:
27 in x 21.6 in x 36.6 in
(68.7 cm x 54.9 cm x 93 cm)
Weight: 106 lb (48 kg)

POWER REQUIREMENTS

100-240V AC
50/60 Hz

DRY ICE CAPACITY

Up to 13 lb (6 kg)

BLAST MEDIA

3mm dry ice pellets only

CONTROL SYSTEM

Analog + Motor driver

FEED RATE

Up to 1.5 lb/min
(0.68 kg/min)

AIR SUPPLY RANGE

72-145 psi (5-10 bar)

BLAST PRESSURE RANGE

29-145 psi (2-10 bar)

AIR CONSUMPTION

50 cfm at 80 psi
(1.41 m³/min at 5.5 bar)

INTERNAL PIPING

3/4 in

Compliant with the EU Machinery Directive
(CE) and UL Design Standards





A.



B.



C.



D.



E.



F.



G.



H.

A. IceRocket PLT
2A0668
Blaster unit

B. 1/2 in Compact Applicator
2E0941

**C. 110V.6 Low Flow
Fragmenting MERN Nozzle**
5E0386

D. 3/4 in Air Supply Hose
90194 - 32ft (Americas)
90199 - 10m (International)

**E. 1/2 in Heavy Duty
Blasting Hose**
504711
16ft / 5m

F. Nozzle Handle
2E0289

G. PPE Kit
2Z0036
Safety glasses, ear
protection, thermal
gloves, and ice scoop

**H. 110V or 220V Plug
& Cord**
2G1591 - 110V (Americas)
2G1592 - 220V (International)



Applicators

Applicator	Part #	Description
Tight Access, 1/2"	2E1728	Designed to be used in hard-to-reach areas
IceGun	511773	Light duty and lightweight applicator
Compact Applicator	2E0941	The IceTech blasting gun is designed to combine with a broad range of nozzles and accessories
Precision Applicator	2E1618	Small, ergonomically designed applicator allows for ease of use, greater control of blasting and reduced arm fatigue

Any of these applicators can be applied to the Basic Package price.



01

Nozzles For Compact & Tight Access Applicators

Nozzle	Part #	Air Consumption	Blast Swath	Feed Rate	Length	Material	Compatible Handle
110V.6	5E0386	50cfm @ 80psi (1.4m³/min @ 5.5 bar)	0.6 in (1.5 cm)	1 - 3 lb/min (0.5 - 1.4 kg/min)	10 in (25.4 cm)	Aluminum	2E0289
106S.6	5E0421	50cfm @ 80psi (1.4m³/min @ 5.5 bar)	0.6 in (1.5 cm)	1 - 3 lb/min (0.5 - 1.4 kg/min)	6 in (15.2 cm)	Anodized Aluminum	n/a
108S.4	5E1174	60cfm @ 80psi (1.7m³/min @ 5.5 bar)	0.4 in (1.01 cm)	1 - 3 lb/min (0.5 - 1.4 kg/min)	8 in (20.3 cm)	Anodized Aluminum	2E0209
110S.6	5E0180	50cfm @ 80psi (1.4m³/min @ 5.5 bar)	0.6 in (1.5 cm)	1-3 lb/min (0.5-1.4 kg/min)	10 in (25.4 cm)	Anodized Aluminum	2E0209
112HK	2E0361	70cfm @ 80psi (2m³/min @ 5.5 bar)	0.25 in (0.6 cm)	1-3 lb/min (0.5-1.4 kg/min)	12 in (30.5 cm)	Polymer Coated SST	n/a
114P.5	5E0183	70cfm @ 80psi (2m³/min @ 5.5 bar)	0.25 in (0.6 cm)	1-3 lb/min (0.5-1.4 kg/min)	10.3 in (26.2 cm)	Polymer	n/a
123S.7	5E0179	50cfm @ 80psi (1.4m³/min @ 5.5 bar)	0.7 in (1.8 cm)	1-3 lb/min (0.5-1.4 kg/min)	23 in (58.4 cm)	Anodized Aluminum	2E0209
123V.7	5E0387	50cfm @ 80psi (1.4m³/min @ 5.5 bar)	0.7 in (1.8 cm)	1-3 lb/min (0.5-1.4 kg/min)	23 in (58.4 cm)	Aluminum	2E0209



02 Nozzles For Precision Applicator

Nozzle	Part #	Air Consumption	Blast Swath	Feed Rate	Length	Material
MC31	13865-506	50cfm @ 80psi (1.4m ³ /min @ 5.5 bar)	0.3125 in (0.8 cm)	0.5 - 1.2 lb/min (0.2 - 0.6 kg/min)	6 in (15.2 cm)	Polymer
MC57	13819-001	50cfm @ 80psi (1.4m ³ /min @ 5.5 bar)	0.569 in (1.4 cm)	1.2 lb/min (0.54 kg/min)	7.3 in (18.3 cm)	Aluminum
MC29MH	5E0248	50cfm @ 80psi (1.4m ³ /min @ 5.5 bar)	0.29 in (0.7 cm)	0.5 - 1.2 lb/min (0.2 - 0.6 kg/min)	6 in (15.2 cm)	Polymer

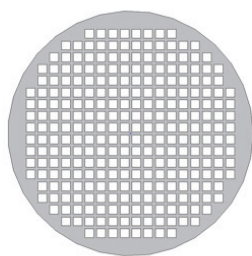


03 Nozzles For IceGun

Nozzle	Part #	Air Consumption	Blast Swath	Feed Rate	Length	Material
5.1.72.128, Ø 5mm, type 1	91101	50cfm @ 80psi (1.4m ³ /min @ 5.5 bar)	0.342 in (0.8 cm)	1.2 lb/min (0.54 kg/min)	5.8 in (14.7 cm)	Aluminum
7.1.72.128, Ø 7mm, type 1	91121	100cfm @ 80psi (2.8m ³ /min @ 5.5 bar)	0.420 in (1 cm)	2-4 lb/min (0.9-1.8 kg/min)	5.8 in (14.7 cm)	Aluminum
6.1.72.128, Ø 6mm, type 1	91111	75cfm @ 80psi (2.1m ³ /min @ 5.52 bar)	0.381 in (0.9 cm)	1.5-3 lb/min (0.68-1.4 kg/min)	5.8 in (14.7 cm)	Aluminum
8.1.72.128, Ø 8mm, type 1	91131	135cfm @ 80psi (3.8m ³ /min @ 5.5 bar)	0.460 in (1.1 cm)	3-4.5 lb/min (1.4-2 kg/min)	5.8 in (14.7 cm)	Aluminum



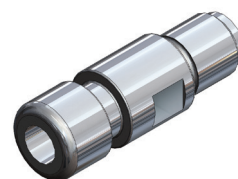
91201S



91423



2E0209



91307

Accessories

Accessory Type	Part #	Description	Applicator
Extension	91201S	Extension pipe, 90° x 8.26 in	IceGun
Extension	91202S	Extension pipe, 45° x 8.26 in	IceGun
Ice Splitter	91423	Icesplitter with grid, 1.5mm, low flow	IceGun
Ice Splitter	200202-v2	IceSplitter w/ hosecoupling 1/2 in (external thread)	IceGun
Ice Splitter	200203-v2	IceSplitter w/ hosecoupling 1/2 in (internal thread)	IceGun
Nozzle Adapter	91007	Nozzle adapter After Splitter	IceGun
Nozzle Holder	500828	Nozzle holder	IceGun
Nozzle Handle	2E0209	1 in nozzle handle	Compact Applicator Tight Access Applicator
Nozzle Handle	2E0289	1 3/16 in nozzle handle	Compact Applicator Tight Access Applicator
Nozzle Insert	91305	Nozzle insert, Ø 5-16	IceGun
Nozzle Insert	91306	Nozzle insert, Ø 6-16	IceGun
Nozzle Insert	91307	Nozzle insert, Ø 7-16	IceGun
Splitter Grid	91444	Long life splitternet - 2.0 mm (Stainless steel)	IceGun
Splitter Grid	91447	Long life splitternet - 2.5 mm (Stainless steel)	IceGun
Nozzle Box	90390	Box of low flow nozzles	IceGun

HEAVY DUTY DESIGN

The IceRocket is built to last. Featuring a robust heavy-duty design that ensures durability and longevity in all types of applications. Constructed with a stainless-steel body, the IceRocket is built to endure heavy use and demanding environments. Its insulated hopper ensures efficient operation, while its rugged and reliable components, made from the highest quality parts, guarantee consistent performance.



DURABLE APPLICATORS

IceRocket applicators are designed to withstand heavy use conditions. With their robust construction, you can rely on these tools to perform consistently over time. The applicators are also designed with ergonomics and ease of use in mind, ensuring comfortable and efficient operation. IceRocket applicators are compatible with a wide variety of nozzles and accessories, giving you maximum flexibility in your applications.



LOWEST COST OF OWNERSHIP

Invest in Cold Jet machines for unparalleled reliability, global support, and long-term value. Our commitment to customer service and quality assurance gives you the peace of mind that your machine is always ready to go when you need it. Our dedicated service team in your region ensures you receive in-field support, repairs, or remote technical guidance. Backed by a 1-year limited warranty and the highest level of support in the industry, you can trust that your investment will yield long-term value.



ENHANCE PRODUCTIVITY THROUGH AN UNRIVALED INTELLIGENCE, CUSTOMER SERVICE, AND SUPPORT PLATFORM

Cold Jet CONNECT introduces Industry 4.0 capabilities to our portfolio of dry ice technologies, providing you with a clear view of the data you need to make decisions that will accelerate your return on investment and profitability through increased machine efficiency and uptime.

Cold Jet CONNECT enables tracking and support of your installed fleet of Cold Jet equipment and helps you understand, control, delegate and orchestrate your daily business without us needing to be physically present.

Advancing dry ice technologies is what we do best. Cold Jet CONNECT offers actionable insights so you can focus on what you do best.

*Analytical platform and machine tracking only available for smart machines (Aero2 PCS60, Aero2 PLT60 & i³ MicroClean 2)

FEATURES & BENEFITS

MACHINE DOCUMENTATION AT YOUR FINGERTIPS

MACHINE & APPLICATION TRAINING

REMOTE SUPPORT

ONSITE PREVENTATIVE MAINTENANCE

REMOTE ASSISTANCE PLATFORM

Service Agreements

- Enhanced troubleshooting and guided repair or service
- Virtual access to Cold Jet technical experts
- Easily request a quote for new parts & service



CONNECT BASIC * Included with ALL Cold Jet Equipment



MACHINE DOCUMENTATION AT YOUR FINGERTIPS

- + Operator Manuals
- + Parts & Accessory Catalog



SERVICE & SUPPORT ANYWHERE

- + Standard 1 Year Warranty



MACHINE & APPLICATION TRAINING

- + Videos On-Demand

CONNECT CARE * BOTH Smart & Standard Blasters



CARE ASSURANCE

- + Additional Year of Standard Manufacturer Warranty (Renew for up to 3 Years Total)



ONSITE PREVENTATIVE MAINTENANCE

- + Performed by Certified Cold Jet Technician
- + One Annual Onsite Service Call



REMOTE ASSISTANCE PLATFORM

- + Certified Cold Jet Technicians on call
- + Mobile friendly platform for technical support from any internet connected device



Notes



Global Headquarters
Loveland, Ohio, USA

European Headquarters
Zellik, Belgium

Asia-Pacific Headquarters
Tokyo, Japan

